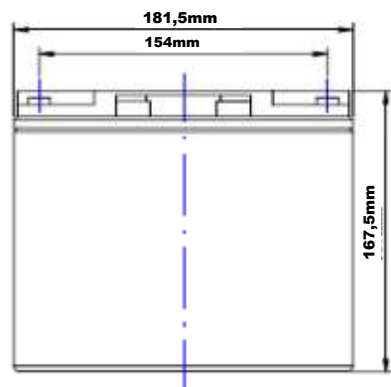


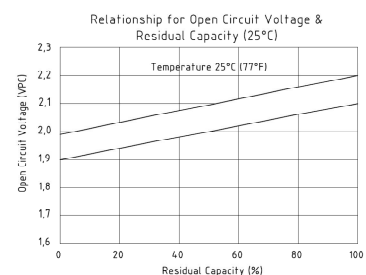
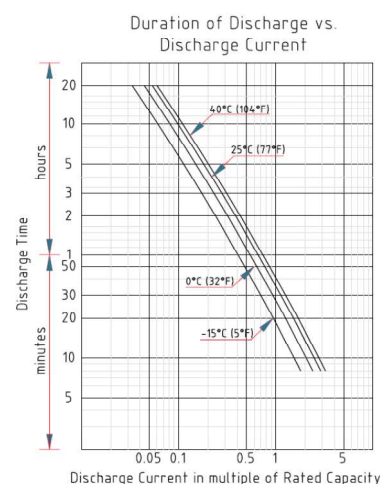
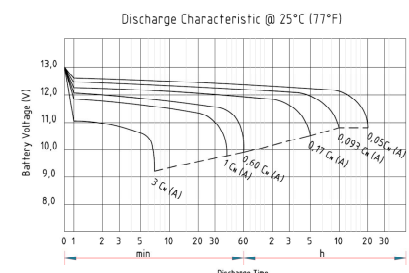
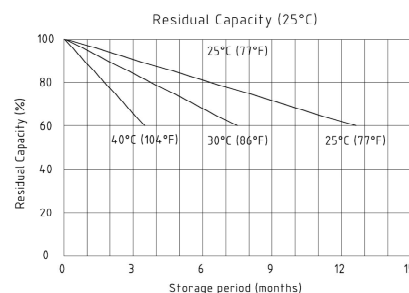
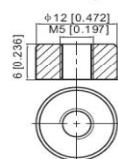

ENERPOWER

Serie SLC 18-12D (18 Ah 12V)

GENERAL PURPOSE BATTERIES



T12 Terminal
Unit: mm [inches]



Specification

Nominal Voltage	12 V
Nominal Capacity (20 Hr)	18 Ah
Dimension	Length 181,5±1 mm (7,14 inches) Width 77±1 mm (3,03 inches) Container Height 167,5±1 mm (6,59 inches) Total Height (with terminal) 167,5±1 mm (6,59 inches)
Approx Weight	Approx 5,32 kg (11,73 lbs)
Terminal	T12
Container Material	ABS
Rated Capacity	18 Ah / 0,9A (20 hr, 1,80 V/cell, 25°C/77°F) 16,7 Ah / 1,67A (10 hr, 1,80 V/cell, 25°C/77°F) 15,2 Ah / 3,04A (5 hr, 1,75 V/cell, 25°C/77°F) 13,65 Ah / 4,55A (3 hr, 1,75 V/cell, 25°C/77°F) 11,7 Ah / 11,7A (1 hr, 1,60 V/cell, 25°C/77°F)
Max Discharge Current	270,0 A (5 s)
Internal Resistance	Approx 16,0 mΩ
Operating Temperat. Range	Discharge : -15÷50°C (5÷122°F) Charge : 0÷40°C (32÷104°F) Storage : -15÷40°C (5÷104°F)
Nominal Operating Temp. Range	25±3°C (77±5°F)
Cycle Use	Initial Charging Current less than 3,6 A Voltage 14,4÷15,0V at 25°C (77°F) Temperature Coefficient -30mV/°C
Standby Use	No limit on Initial Charging Current Voltage 13,5÷13,8 V at 25°C (77°F) Temperature Coefficient -20mV/°C
Capacity affected by Temperature	40°C (104°F) 103% 25°C (77°F) 100% 0°C (32°F) 86%
Self Discharge	Enerpower SLC series batteries may be stored for up to 6 months at 25°C (77°F) and then a freshening charge is required. For higher temperatures the time interval will be shorter.

Constant Current Discharge (Amperes) at 25°C (77°F)

F.V / Time	10 min	15 min	20 min	30 min	45 min	1 h	2 h	3 h	4 h	5 h	6 h	8 h	10 h	20 h
1,85V / cell	26,0	22,7	19,9	15,6	11,6	9,36	5,56	4,17	3,39	2,87	2,49	1,98	1,63	0,89
1,80V / cell	30,8	26,5	22,7	17,2	12,7	10,10	5,97	4,39	3,54	2,98	2,57	2,03	1,67	0,90
1,75V / cell	33,8	28,4	24,1	18,1	13,3	10,60	6,18	4,55	3,64	3,04	2,62	2,07	1,70	0,91
1,70V / cell	36,8	30,3	25,4	18,9	13,8	10,90	6,34	4,67	3,73	3,11	2,68	2,10	1,72	0,92
1,67V / cell	38,0	31,3	26,0	19,4	14,1	11,10	6,43	4,71	3,76	3,14	2,70	2,11	1,73	0,93
1,65V / cell	39,2	32,2	26,6	19,8	14,3	11,30	6,51	4,75	3,79	3,17	2,72	2,12	1,74	0,93
1,60V / cell	41,7	34,1	28,0	20,5	14,9	11,70	6,68	4,86	3,87	3,22	2,76	2,15	1,76	0,94

Constant Power Discharge (Watts) at 25°C (77°F)

F.V / Time	10 min	15 min	20 min	30 min	45 min	1 h	2 h	3 h	4 h	5 h	6 h	8 h	10 h	20 h
1,85V / cell	53,63	46,87	41,16	32,24	24,02	19,29	11,40	8,48	6,87	5,82	5,04	4,00	3,31	1,81
1,80V / cell	64,15	55,33	47,38	35,85	26,41	21,06	12,22	8,96	7,20	6,04	5,20	4,12	3,39	1,82
1,75V / cell	71,25	60,00	50,81	38,03	27,87	22,22	12,72	9,31	7,40	6,17	5,30	4,18	3,43	1,83
1,70V / cell	78,65	64,60	54,15	40,15	29,13	23,06	13,11	9,57	7,59	6,32	5,35	4,19	3,47	1,84
1,67V / cell	81,91	67,13	54,83	41,22	29,82	23,56	13,30	9,70	7,70	6,40	5,40	4,20	3,50	1,85
1,65V / cell	85,59	69,32	57,25	42,25	30,36	23,98	13,50	9,77	7,73	6,44	5,49	4,28	3,51	1,86
1,60V / cell	90,32	73,61	60,44	43,91	31,56	24,82	13,86	9,98	7,89	6,53	5,57	4,33	3,54	1,87